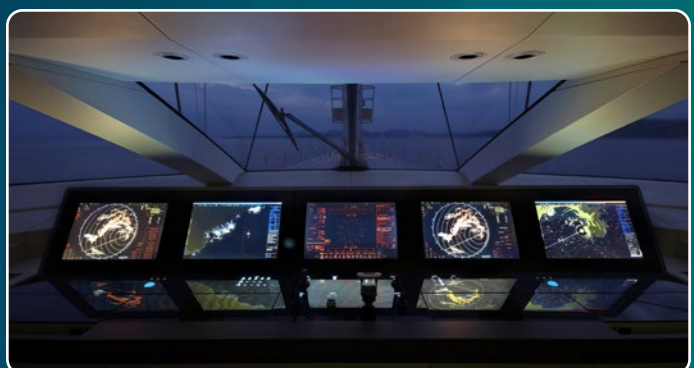




RADIO ZEELAND DMP

YACHTING



Radio Zeeland DMP

Radio Zeeland was founded in 1952 and started as a small shop in Hulst and through the years it changed to a repair center for navigation and communication products in Terneuzen. Over time, the need for reliable and high-quality products for inland shipping became apparent. This triggered focus on development and production of navigation equipment. The core of our portfolio is our own rate of turn gyro, which is complemented with a display instrument, and several autopilot options. By adding a shallow water echo sounder, and other equipment several complete product lines were created. Recurring theme is the focus on design, quality and a user-friendly operation.

After 20 years of full dedication to the commercial shipping industry, we have taken the steps into the yachting market. With new ideas and techniques, we have introduced a completely new perception of the integrated bridge. Over the years we have installed our systems on some of the world's most prestigious yachts and work closely together the most respected shipyards. High quality and matching aesthetics are the key for all our panels, consoles and integrated systems.

Whatever the challenge, Radio Zeeland DMP offers the perfect solution.



Your partner for:

- Bridge Control Panels
- Bridge Display Panels
- Fly Bridge Control Panels
- Fly Bridge Display Panels
- Wing- and AFT stations
- Alarm/Safety Panels
- Custom Build Bridge Consoles
- Alarm, Monitoring, Control System (AMCS system)
- Re-Fit
- Ultra High Bright Display
- Supply of NAV/COM/Security/ Fire systems

All panels available in foil and/or glass (hardened).

The process is in close collaboration with the owner, taking into consideration the specific wishes and demands. The result is a matching solution that enhances the design onboard.

For us, your project is unique and requires a similar unique approach. Custom built solutions means going beyond the standard elements to achieve your perfect wheelhouse experience. Please read on to inform yourself about our possibilities.

Bridge Control Panels

RZ DMP goes to the next level by fully integrating all control, navigation and communication systems in a stunning looking panel.

Full Integration

All NAV/COM instruments can be seamlessly integrated in/under foil or glass panels creating a ergonomic design and stunning look. Together with dedicated/specialized NAV/COM partners we maintain type approval and warranty.



BRIDGE DISPLAY PANELS

FOIL/GLASS

Bridge Display Panels

- All panels are available in any color.
- Integration of all kinds of displays and instruments.
- Minimum reflective glass to reduce reflection.
- Curved glass display panels (always optical bonded).
- All display panels with or without bonding available.



OUTSIDE CONTROL PANELS

FOIL/GLASS

Outside Control Panels

- All our outdoor panels are IP-67 protected.
- 3rd Party elements keep their own IP-rating.



OUTSIDE DISPLAY PANELS

FOIL/GLASS

Outside Display Panels

- All our outdoor panels are IP-67 protected.
- Integration of all kinds of displays and instruments.



WINGSTATION / AFT-STATION



wingstation / aft-station

- All our outdoor panels are IP-67 protected.
- 3rd Party elements keep their own IP-rating.



ALARM / SAFETY PANEL

FOIL/GLASS

Safety panels

The monitoring of a large vessel is a demanding task on its own. Providing an orderly overview over the entire

vessel is an essential task. To provide an overview over the position and nature of any alarm, there is no better tool than the RZ DMP safety panel.

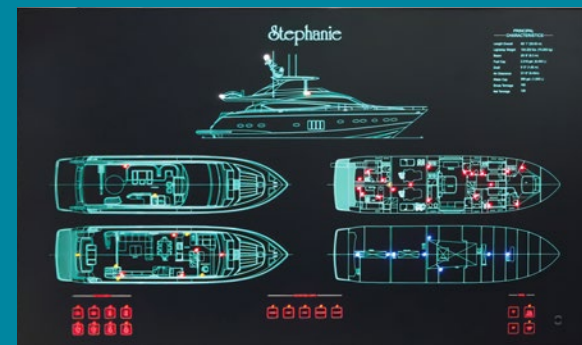
Safety, or otherwise called, mimic panels can also be used to monitor navigation lighting, bilges or pumps.

The layout drawings of the vessel are used to highlight the position of the alarms generated throughout the vessel.

During the alarm, the position of the calamity will light up on the overview, providing instant awareness of the

situation. The panels are backlit which assures a full illumination of deck plans and other views. Providing a perfect and clear readability of the ships mimics.

With the Radio Zeeland DMP safety panels it is possible to add buttons under the foil or glass top layer. Controls for navigation lightning, panel dimming and pumps can be integrated in your safety panel.



CUSTOM BUILD BRIDGE CONSOLES



RZ DMP Consoles

The Radio Zeeland DMP consoles are designed in such a way that the both yard and the end user benefit from it. All equipment is placed to achieve the highest service friendliness. Drawers and hatches are integrated to store and hide various kinds of equipment and charts.

The Radio Zeeland DMP wheelhouse console structures are built for the integration of navigation and communication equipment and provide a solid base structure for mounting the Radio Zeeland DMP control and displays panels.

Materials

Our consoles are made out of sheet metal. Upon the customers requirement we can apply any finish to the sheet metal console. Anodized or powder coated surface finishes can make the structure suitable to stay in sight, preventing further need of processing.

The console can also be used as a base structure for the interior panels, to let the console smoothly blend in with the rest of the wheelhouse interior.

Installation time

Because the entire console is produced at our factory, installation time is dramatically decreased. After the console is built, the entire structure can be placed(in sections) into the wheelhouse, resulting in short installation time on site. This reduces the amount of effort during the last months of the build for all involved parties. Panels are easily installed on the console as they are perfectly aligned to one another.

After installing the console, control and display panels, the console provides a solid base for any kind of exterior finish.



CUSTOM BUILD BRIDGE CONSOLES

Ventilation ducts

Ventilation ducts create a perfect flow of cool air throughout the console to provide sufficient cooling of the equipment. These ventilation ducts can simply be connected to the ships air-conditioning system.

Racks

Racks are made to slide or pivot out of the console, to achieve good serviceability and to increase the amount of space inside the console during service.



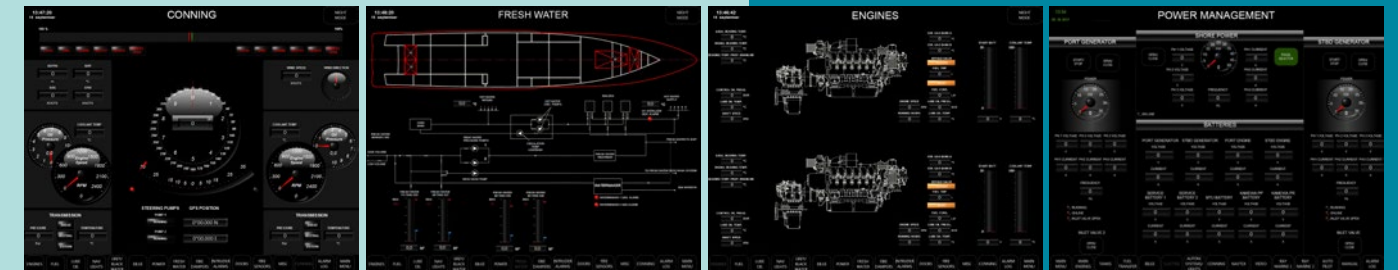
Leveling facilities

Leveling facilities are installed under each console, to level out and fixate the console once it is placed onboard.

Terminal strips

Terminal strips are connected to the cables that run out of the console. All cables are bundled so that only one cable cluster runs out of the console. Thanks to the use of terminal strips, swift installation is made possible.

AMCS-SYSTEM



RZ DMP AMCS-System

RZ DMP provides AMCS software solutions for any size and class of vessel. We design and engineer software for some of the most complex systems of the world's most prestigious yachts. With Radio Zeeland DMP alarm monitoring systems your custom yacht will have a customized system that meets all demands.

Full Custom

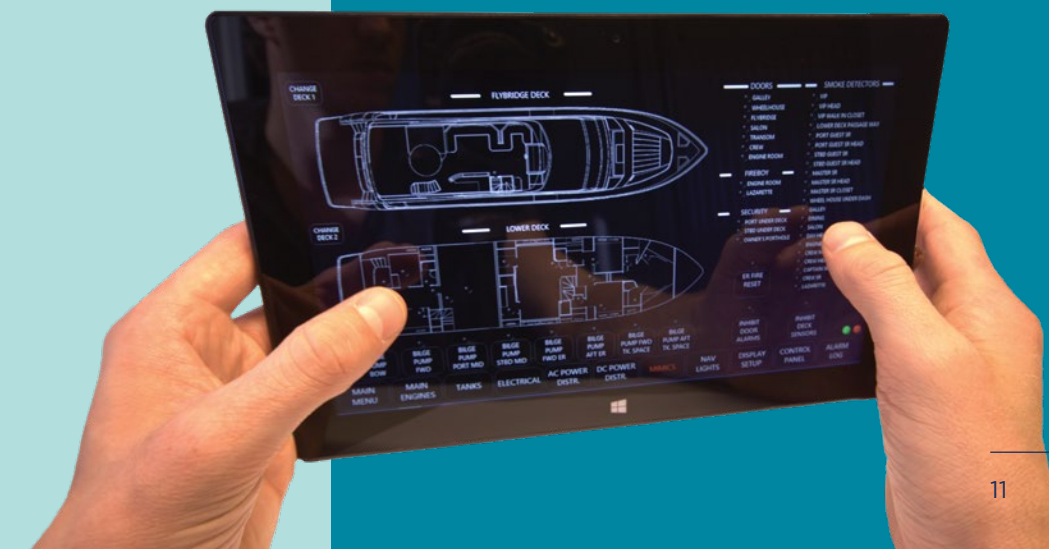
Alarm, monitoring and control systems are custom in nature, as every vessel is different. Radio Zeeland DMP has a software engineering team to fully customize your monitoring pages. Specials can be developed and engineered to your preferences, creating your highly personal system.

Monitoring tablet

RZ DMP offers the possibility to deliver a tablet with the entire AMCS system installed. The tablet can be used to monitor alarms in the wheelhouse, engineers cabin, crews mess or any other desired location, so captains and chief engineers can monitor the vessel from any place onboard, provided that there is a Wi-Fi connection.

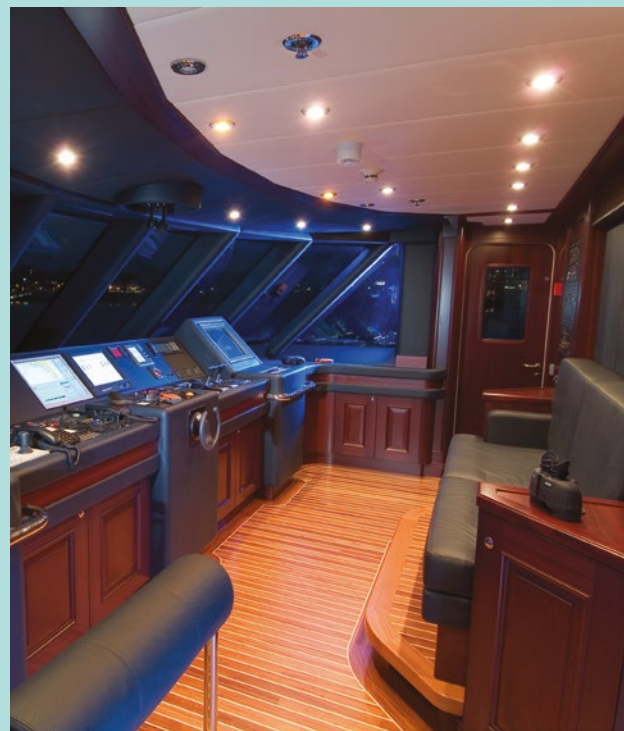
UMS/Watch Alarm

RZ DMP's UMS system can be delivered to all class and also meets UMS rules and regulations.



Refit

RZ DMP can do a make over (upgrade) of you existing wheelhouse or outside station. We can take care of survey Design Engineering and prefab of your new systems when the boat is still in commissioning. After everything is ready in the factory we will dismantle the existing systems and install the prefab new systems. Ensuring the downtime of your vessel is reduced to the minimum.



Before



After

Ultra High Bright Display 15", 19" and 24"

These Ultra high bright displays are designed to provide the customer with a clear, sharp and bright image under any condition, night or day. This display is available as rear-mount and panel-mount, making it suitable for integration into cabinets, panels or other constructions.



Brightness

With a minimum brightness of 0.1 cd/m² and a maximum brightness of 2500 cd/m² this display is designed to provide optimal viewing comfort and image quality even during the darkest nights or the brightest days.

Touch Screen

Our high bright screens are all equipped with projected capacitive touch screens. This allows the user full control of any application without using an external mouse.

Display Sizes

With the displays available in 15 inch XGA, 19 inch SXGA and 24 inch full-HD widescreen there is always a size that will fit your application.

3rd Party interface

The 3rd party interface allows a custom interface to be used on the display. The choice to use buttons, touch screens or third party equipment to control your screen is up to you. Even communication over ethernet is possible, making this display suitable for a variety of purposes.

Mounting angle

The Radio Zeeland DMP high bright screen is resistant to solar loading which makes it very suitable for outdoor use. These displays will not show black spots when exposed to direct sunlight, creating the possibility to mount them in a horizontal position. With this possibility the Radio Zeeland DMP High Bright Screen is the only one in its kind.





Commercial Shipping, Yachting and OEM

RZ DMP has almost 50 years of experience as manufacturer of navigation equipment. Not only production, but design and R&D facilities allow for swift respond to ever changing market needs. Since our founding we have expanded worldwide to become one of the market leaders in the field of marine navigation and custom integration equipment.

Radio Zeeland DMP offers the complete solution for the inland shipping-, yachting-, short sea- and offshore market.





Radio Zeeland DMP

Industrieweg 17
4538 AG Terneuzen
The Netherlands
+31 115 645400

sales@radiozeeland.com
www.radiozeeland.com